

BECI The Cafe

〈 BECI 2nd Campus, Women Only 〉



WHY BAGUIO?

The Best Environment to Learn English

In the Philippines, Baguio has cool temperatures throughout the year. The prevailing climate in Baguio makes the city the best place to study English.

Baguio, The City of Education

There are more 10 educational institutions in Baguio, including six universities and prestigious academies. Taking advantage of the educational city, BECI offers classes with well-trained teachers and exclusive program for the training. Also, the overall English level is very high due to the regional characteristics that Baguio locals have since the city was developed by Americans during the colonial period.

Safe City

The city of Baguio is known to have a low crime rate. Accessibility to police stations and services also assures safety for the locals. The city's emergency medical services and fire department along with trained professionals and personnel are very reliable as well since ambulances and fire trucks are ready for use whenever needed. An emergency number, 117, can also be dialed in times of emergency and distress.

Baguio, Center of Travel

There are many tourist attractions to see and activities to do in Baguio city. Parks, malls, and other recreational areas are accessible to the public and restaurants and coffee shops are also found around the city. The city is also surrounded by other must-see places in the country including the beaches along La Union, the Hundred Islands in Pangasinan, the rice terraces in Banaue which is one of world's wonders, and the most popular cultural heritage in the Cordilleras, the Sagada cave.



WHY BECI THE CAFE?



**Private Space
for female students!
Level Up! English Skills**



**Enhanced Security
Guarantee Safety!
The safest
BECI THE CAFÉ!**



**Special Programs
for Women!
Open 24 hours,
Free to Use!**

BECI the Café, the 2nd Campus of BECI is the very first international language school only for women. We offer students a pleasant and educational environment to communicate in English. Classes in the Lady Campus of BECI aims at providing the best and unique educational environment: 1:1 classroom, group classroom, balcony, garden, dining room, lounge and cooking studio will guarantee superior time for studying and relaxing as well.

BECI the Café is located 10 mins by car from BECI main campus & international school in the richest village, Camp 7. Since it is within one of the safest places in the city, the well-being of our students is assured. Guard houses with approachable officers are on service day and night, and the barangay observes a strict curfew to implement safety measures to all residents in the area.

What makes BECI the Cafe special? It is due to the different special programs that we offer.

- 1) **LANGUAGE EXCHANGE PROGRAM**, students can teach their native language to Filipino friends while learning English from them.
- 2) **BEAUTY CARE SERVICES** that includes massage and skin care.
- 3) **GLOBAL COOKING CLASS** where you can learn how to cook different delicacies from different countries.
- 4) **FACILITES** the classrooms and cooking studio are always available for our students.

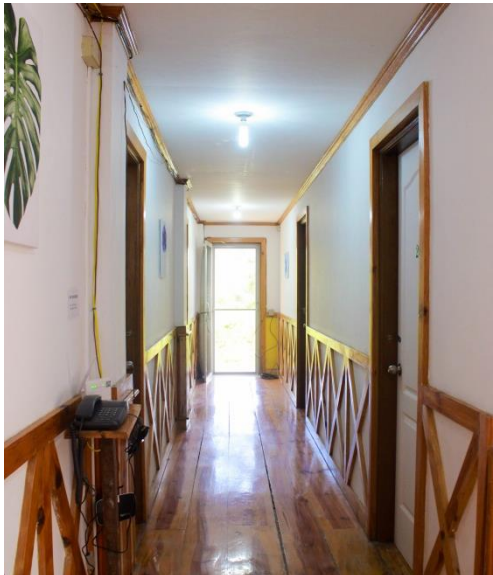


BECI THE CAFÉ Lecture Building



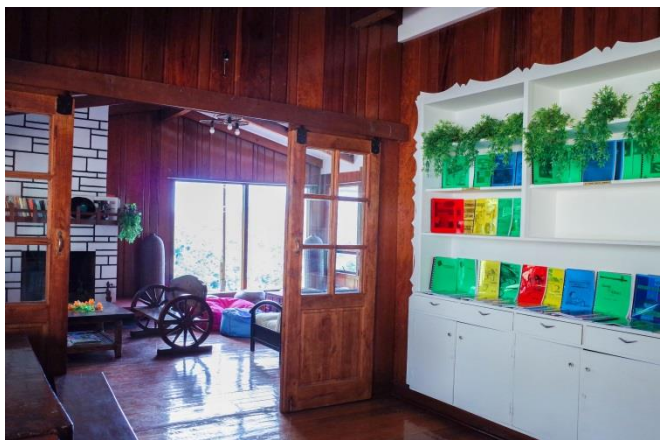


BECI THE CAFÉ Dormitory Building





BECI THE CAFÉ Etc Facility



▼ Big supermarket(C & Triple A Grocery Store) a five min. walk from BECI the Cafe ▼





BECI THE CAFÉ Exterior





SPECIAL PROGRAM

BECI the Café named the Lady Campus is offering special services to customizable by women.

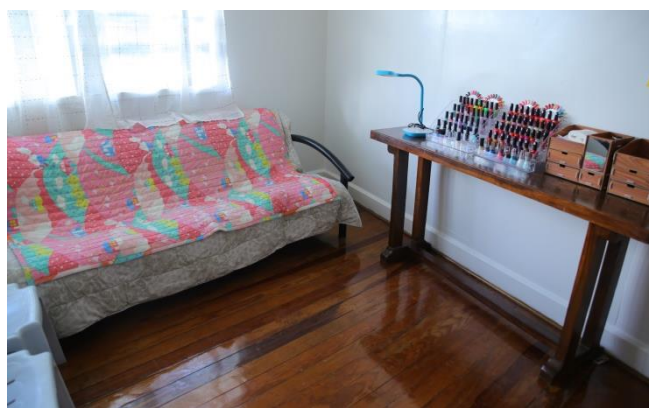
➤ Language exchange program

Every Saturday, students can join a Language exchange program with university students from a local State University which has partnership with BECI the Café. Through this program, students can make local friends and have a chance to improve their English even when they are out of the classroom.



➤ Massage & Beauty Care Service

Students can also find massage & skincare shop in BECI the Café campus and release their stress from studying. Total 2 coupons are offered to students every month, 1 massage coupon (value of 300 peso) and 1 skincare coupon.



➤ Cooking Class

Every Wednesday night there are global cooking classes, students will cook diverse food of their friends' countries and learn their culture at the modern and white-toned cooking studio in BECI the Café.





SEMI SPARTA PROGRAM

SPEED ESL

9hours

It is a semi-Sparta program with the longest history in BECI Language. This program is an open program for beginners, intermediate, and also advanced students. Students are trained professionally with all of the modules so that students may deal with English through balanced study in each areas of the English Language namely: Speaking, Listening, Reading, and Writing.



1 : 1 Class
4hours

Speaking Listening
Reading Writing

Group Class
2hours

- Class by level
- Instructional material made by lecturer

Night Class
3hour

- Native's Conversation Class
- Grammar Class
- Sentence Pattern Class

Non SPARTA students who are interested in taking the SP program & Rehab program have to pay an additional charge.

SP program : PHP2,000 (Once a week /a month)

Rehab program : PHP1,000 (1 week)

SPARTA PROGRAM

SPARTA ESL

11hours

It is a program more tightly scheduled than the normal ESL program as it is only focused on the improvement of linguistic ability from the first day until the last day of the student. This program is more for the passive students who basically need other's control than the actively studying student therefore, going out during weekdays is not allowed. Besides, this Sparta program concentrates on correcting every single student's speaking and gives student a chance to correct the wrong expressions perfectly through SP program. One week is focused on studying pronunciation by attending a specialized class, Rehab (pronunciation correction) program.



1 : 1 Class
4hours

Speaking Listening
Reading Writing Grammar

Group Class
2hours

- Class by level
- Instructional material made by lecturer

Night Class
3hour

- Pronunciation Class
- Vocabulary Class
- Grammar Class

It is possible to register for the guaranteed Class (TOEIC, TOFLE, IELTS) in the Beci main campus after taking the ESL of BECI the Cafe



Intensive Speaking Prescribing Program

SPEAKING PRESCRIPTION

Summary

Checking the improved ability during language training and catching student's weakness (vocabulary, grammar or pronunciation etc.) to help student to concentrate in a pertinent field.

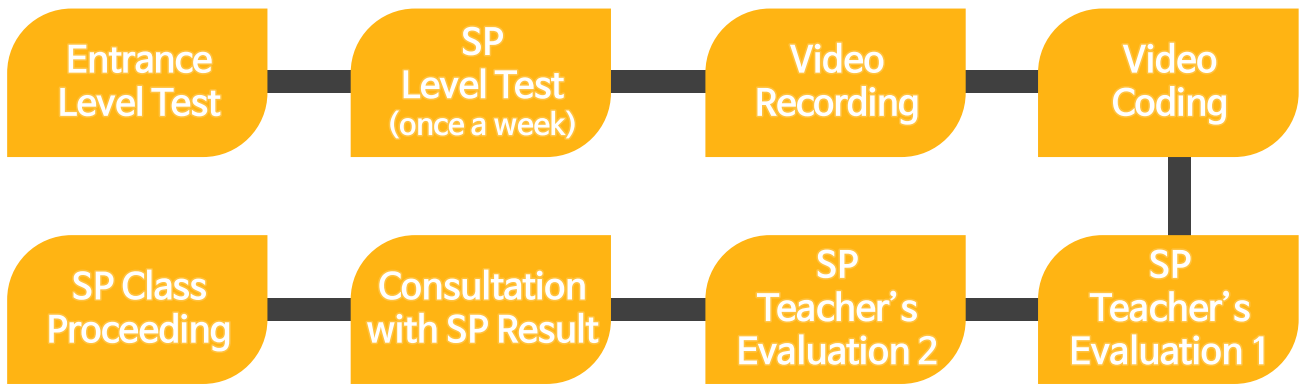
System of Test

Records all the processes, Methods include interview, encouraging student's active participation through various methods such as question and answer, picture description, and explanation of a topic.

System of Evaluation

A professional teacher in charge of SP transcribes the student's spoken output from a recorded video and checks the errors on grammar, pronunciation, and fluency. The grades are divided into 9 scoring categories based on an objective rating standard (based on pronunciation, stress, intonation, vocabulary, context consistency, content accuracy, understanding of listener, accurate grammar, flexible use of well-polished expression etc.). The score generated from these categories serves as the basis of student's level.

SP Test Process



The number of SP Test per program

- * Semi Sparta – Once a Month
- * Sparta – Once a Week

SP TRANSCRIPTION & RESULT

SPEAKING PRESCRIPTION TRANSCRIPTION

English Name: Hans

Examination Date: August 12, 2016
Examiner: T. Rence

Task: Profiling
Time: 3 minutes

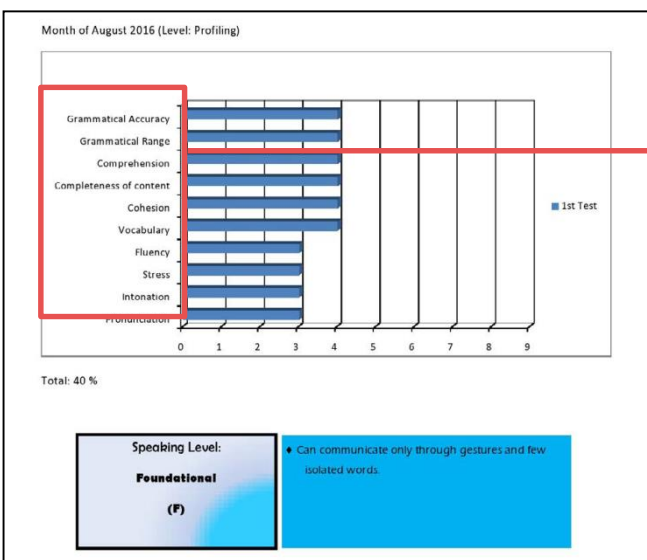
Teacher: Good afternoon, Hans
Hans: Good afternoon, Teacher.
Teacher: This week your task is profiling so you're going to introduce yourself.
Hans: Yes, My name is Hans (I am) 22 year (years) old and I came from Vietnam. Uhm, I'm a just-to-
I'm a funny guy (and) I (am) not scary. Uhm, I'm humorous and uhm... (...) um... : My major in the
University is a Public finance (finance), it is a complicated... Complicated... no it is a difficult (difficult) and stranger
subject um... but it (is) really important because um... it is necessary for my country (country). so I think I has to learn
has first... My hobby, My hobby is a to reading (a) Manga (book), I really likes mang... Manga of Japan Japanese
reading cong book comic book of Japanese. That's all.
Teacher: Thank you

MISTAKES AND CORRECTIONS:

1. I really likes mang... Manga of Japan Japanese reading cong book comic book of Japanese.
Correction: _____
Review: _____

SP TRANSCRIPTION & RESULT

- Pronunciation** Pronunciation Correction: A teacher in charge of SP recording catches the wrong pronunciation and guides to correct pronunciation
- Grammar** Correct the wrong structured sentences to an appropriate structure
- Expression Correction** Correct the unnatural expressions and guide to simple expression



SP Result Sheet

- Evaluation of 9 criteria such as grammar, understanding, sentence composition, vocabulary, stress etc.
- The main goal of SP is to increase the number of commonly used expressions, and to immediately correct the errors of the students so that they would use correct expressions in every day conversation.
- Students will use correct expressions and correct pronunciation immediately through this program within a week and know the level of completeness of the expressions after 3 to 4 weeks.
- The leveling of the scores of SP is set from 1 to 9. 4 to 6 refers to intermediate level, and 7 to 9 refers to near advanced level.



Intensive Pronunciation Prescribing Program

REHAB PROGRAM

The Rehab program is BECI's new program which solves individual student's chronic problem and is a special program which clearly settles 'pronunciation' problem known as the greatest weakness of language training in Philippines.



내용

Pronunciation lessons are taught by native speaker teachers - American and British. Classes are composed of less than 5 people and is done for 1 week in a given term.

대상

Sparta student who is stressed with his/her weakness in pronunciation.
(Students are interested in taking the Rehab program have to pay PHP1,000)

수업

British and American teacher alternately teach one class (1hr 30min) about pronunciation and review with Filipino teacher (3 hrs)

시간

8 A.M ~ 5 P.M (British/American Teacher)
7 P.M ~ 9 P.M (Filipino Teacher)

특이사항

EOP (English Only Policy) during Rehab program and separate management from other students



BECITHECAFÉ (2nd Campus)

#43 Gladiola Street Amparo Heights, Camp 7, Baguio City

BECI (Main Campus)

381 purok 5, Dontogan, Baguio City

Email. mskim@beciedu.com